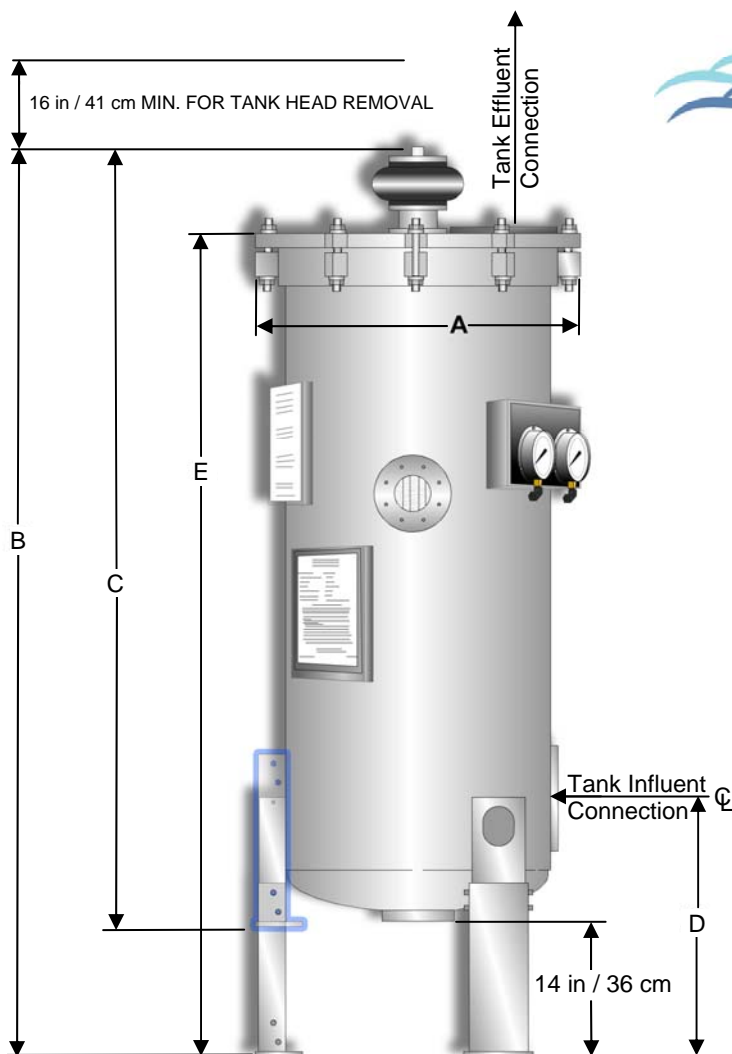


Defender™ Automatic Regenerative Media Filters

Filter Model Sizing Information, Dimensions & Capacities



Model Number	A	B	C (Note 1)	D	E
	in	in	in	in	in
SP-24-42-327	30.75	90	76.5	27.5	81
SP-27-48-487	33.25	95	81.5	27.5	86
SP-33-48-732	39.25	102.5	89	31.5	93.5
SP-41-48-1038	47.75	107	93.5	35.5	97.5
SP-49-48-1548	54.75	111	96	36	101.5
SP-55-48-2076	61.75	116	96	39	105.5

Model Number	A	B	C (Note 1)	D	E
	cm	cm	cm	cm	cm
SP-24-42-327	78.5	229	194.5	70	206
SP-27-48-487	84.5	241.5	207.5	70	218.5
SP-33-48-732	100	260.5	226.5	80	237.5
SP-41-48-1038	121.5	272	237.5	90.5	248
SP-49-48-1548	139.5	282	244	91.5	258
SP-55-48-2076	157	295	244	99	268

- Tabulated data represents standard non-ASME construction. Consult Neptune-Benson for verification on ASME certified and custom fabricated vessels.
- Head and shell material to be .25 in thick carbon steel.

Model Number	Filter Area		Maximum NSF Flow Rate		Recommended Flow Rate Range (Note 2)		Tank Volume	
	ft ²	m ²	2.0 gpm/ft ²	4.89 m ³ /hr	.5 - 1.4 gpm/ft ²	1.22 - 3.42 m ³ /hr	gallons	m ³
SP-24-42-327	223	20.72	446	101.32	112 - 312	25.28 - 70.86	128	.484
SP-27-48-487	381	35.60	762	174.08	191 - 533	43.43 - 121.75	159	.602
SP-33-48-732	572	53.14	1144	259.85	286 - 801	64.83 - 181.73	250	.946
SP-41-48-1038	812	75.44	1624	368.90	406 - 1137	92.04 - 258.00	441	1.669
SP-49-48-1548	1211	112.50	2422	550.13	606 - 1695	137.25 - 384.75	615	2.328
SP-55-48-2076	1625	150.97	3250	737.48	813 - 2275	141.48 - 516.32	841	3.184

Model Number	Tank Conn. Inches (Note 3)	Tank Conn. mm (Note 3)	Drain Conn. inches	Drain Conn. mm	Tank Footprint (Note 4)		Perlite		Upper Head Weight		Head & Tubes Weight		Tank Ship Weight		Operating Weight	
	imperial	DN	imperial	DN	ft ²	m ²	lb	kg	lb	kg	lb	kg	lb	kg	lb	kg
SP-24-42-327	4	100	3	80	24	2.23	18	8.16	310	141	584	265	1450	658	2515	1141
SP-27-48-487	6	150	3	80	27	2.5	30	13.61	350	159	660	299	1650	748	2970	1347
SP-33-48-732	8	200	3	80	33	3.06	45	20.41	475	216	790	358	1800	817	3880	1760
SP-41-48-1038	8	200	4	100	44	4.09	64	29.03	750	340	1265	574	2350	1066	6019	2730
SP-49-48-1548	10	250	4	100	58	5.4	96	43.54	1085	492	1920	871	3320	1506	8437	3827
SP-55-48-2076	12	300	4	100	72	6.7	128	58.06	1385	628	2300	1043	3850	1746	10847	4920

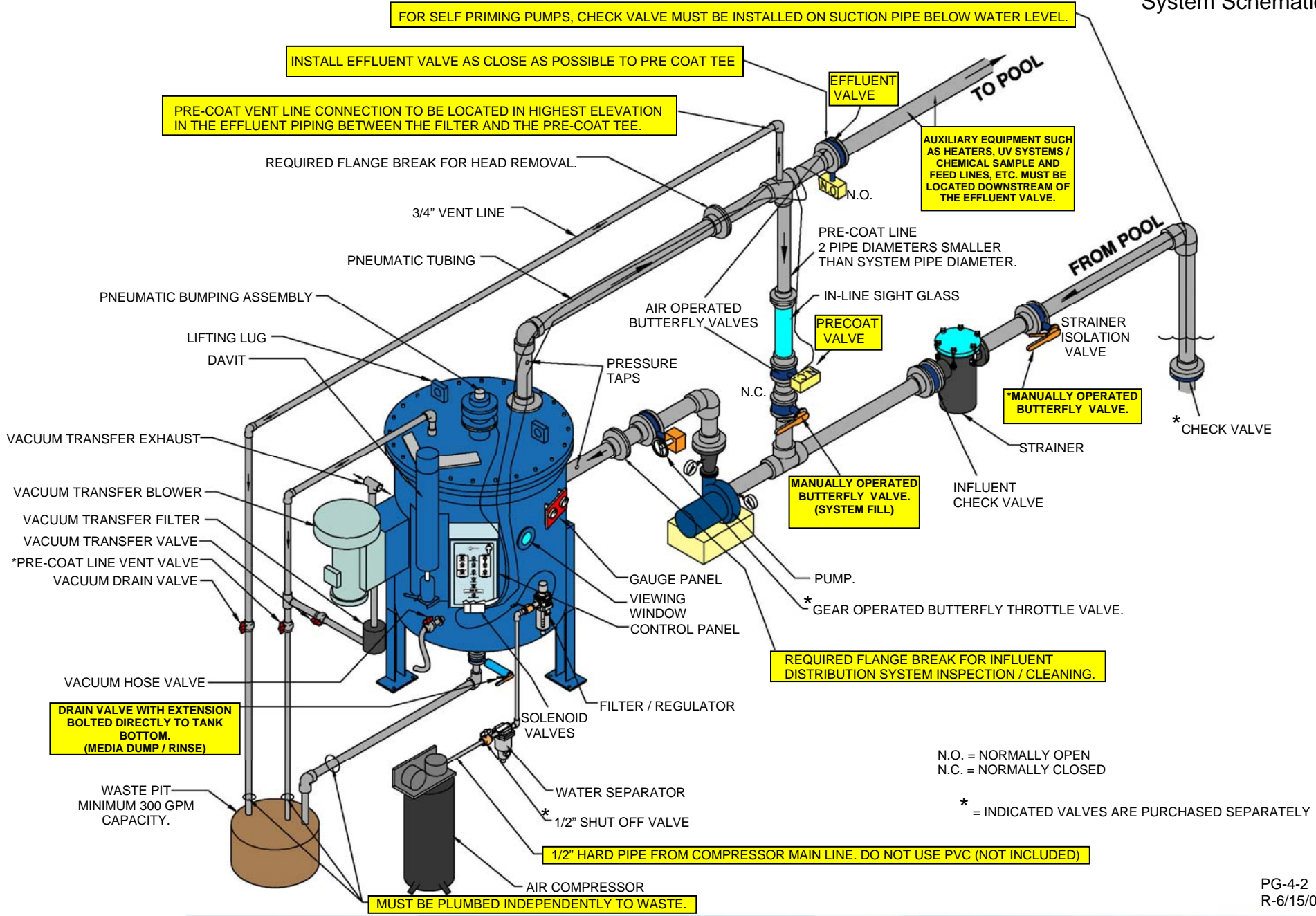
Note 1: "C" dimension indicates overall height with tank legs in the shipping position.

Note 2: Recommended flow rate range is suggested to optimize filtration performance.

Note 3: Tank connection sizes based on velocity not to exceed 10 fps or 3.048 mps.

Note 4: Listed tank footprint takes into account space required for rotation of the tank head.





N.O. = NORMALLY OPEN
 N.C. = NORMALLY CLOSED

* = INDICATED VALVES ARE PURCHASED SEPARATELY